

**KBT****XXPol, 2\*820-960MHz 65° 16dBi 0-10°  
Integrated RET ( RemoteControl Unit )**

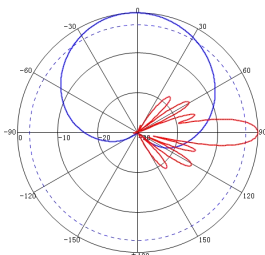
KB65D0809A4-16D-IG

**Electrical specifications**

Frequency Range (MHz)	820-960	
	820-880	880-960
Polarization	$\pm 45^\circ$	
Gain (dBi)	16	
Electrical Downtilt ( $^\circ$ )	0-10	
Horizontal Power Beam Width ( $^\circ$ )	$65 \pm 5$	
Vertical power beam width ( $^\circ$ )	$\geq 9$	
1st Upper Sidelobe Suppression (dB)	$\geq 15$	
Front-to-Back Ratio (dB)	$\geq 25$	
Cross-Polar Discrimination (dB)	$\geq 15 @ \pm 30^\circ$ ( $\geq 10 @ \pm 30 \sim 60^\circ$ )	
Isolation (dB)	$\geq 28$	
Impedance ( $\Omega$ )	50	
VSWR	$\leq 1.4$	
Intermodulation IM3 (2x43dBm carrier)	$\leq -110$ dBm	
Maximum Power(W)	250	
Ground Protection	DC Grounding	

**Mechanical specifications**

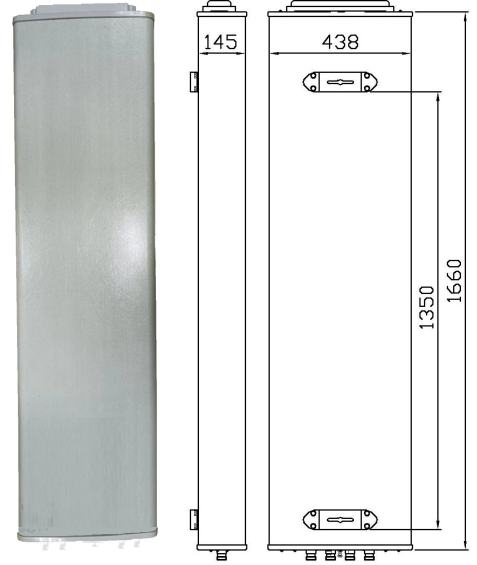
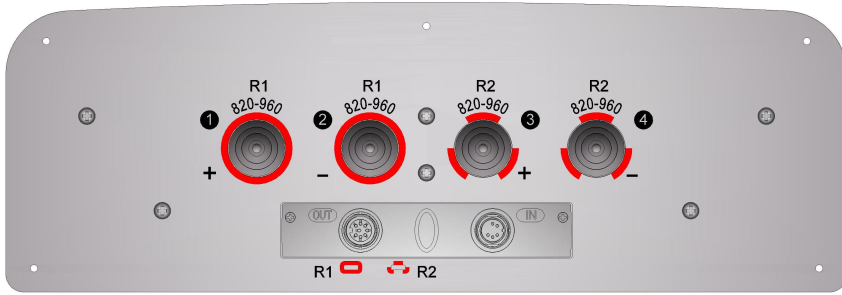
Connector	4*7/16DIN Female
Connector position	Bottom
Height/width/depth (mm)	1660*438*145
Packing size (mm)	1920*510*230
Weight (kg)	19.5
Bracket Weight (kg)	4
Radome material and color	Fiberglass/Gray
Mechanical tilt ( $^\circ$ )	0-12
Operating temperature( $^\circ$ C)	-40~+60
Rated wind velocity (m/s)	60
Suitable pole diameter (mm)	$\Phi 50 - \Phi 115$
Mounting kit	JM-900DZF
Electric regulation mode	Integrated RCU (AISG2.0)
RCU mode	RCU-P2D-RAE
Perception module Support	Remote Antenna Extension sensor module(Pluggable)

**Pattern**820-960MHz:  $\pm 45^\circ$ 



# KBT

## XXPoI, 2\*820-960MHz 65° 16dBi 0-10° Integrated RET ( RemoteControl Unit )



### Installation Sketch

